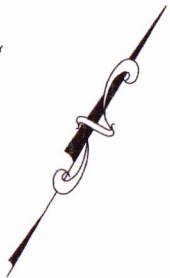
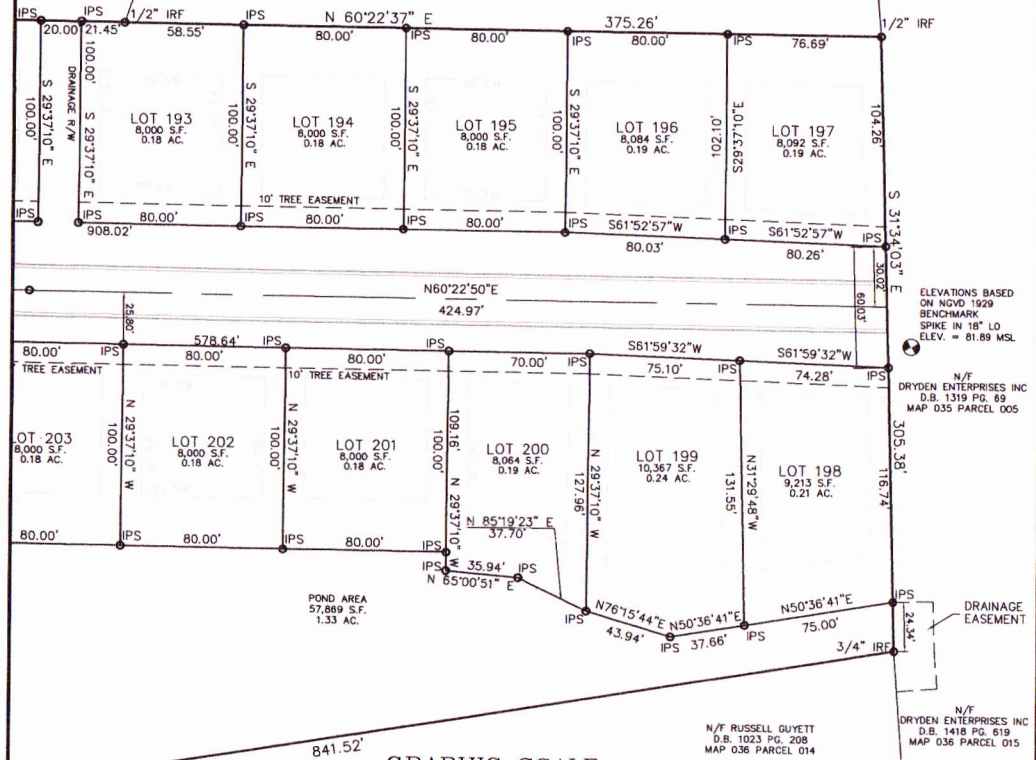


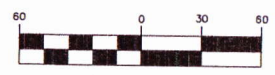
ACCORDING TO THE FLOOD INSURANCE RATE MAPS FOR LIBERTY COUNTY, COMMUNITY PANEL 13179C02100 DATED SEPT. 26, 2008 THIS PROPERTY IS IN A FLOOD ZONE X.



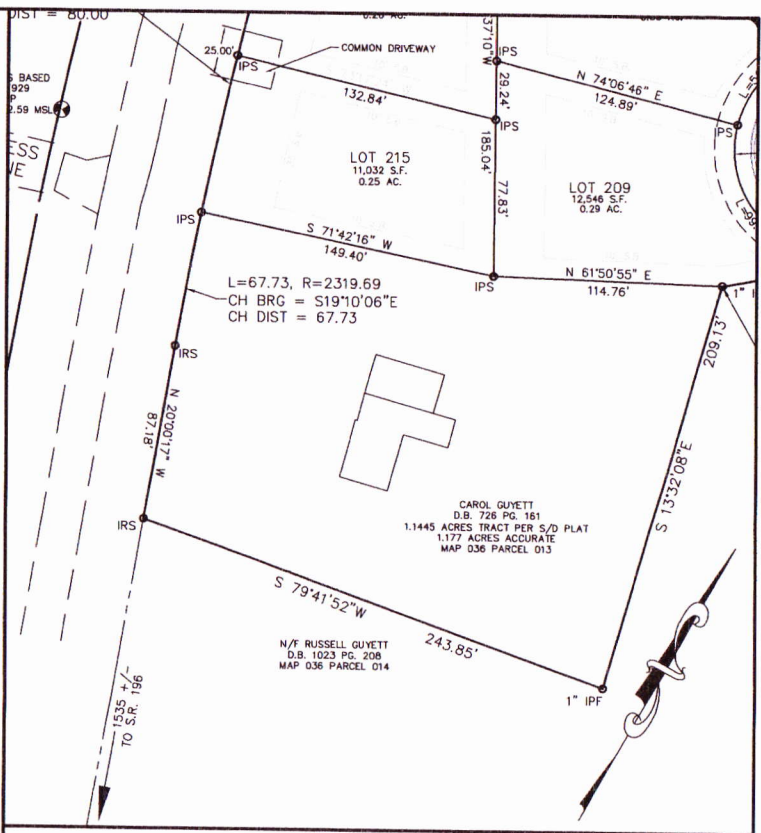
N/F EDWARD H & LOUISE C WELLS DB 616 PAGE 489  
MAP 036 PARCEL 004



GRAPHIC SCALE



( IN FEET )  
1 inch = 60 ft.



VICINITY MAP  
NOT TO SCALE

REVISIONS:	
1	SEPTEMBER 26, 2011

**T. R. Long Engineering, P.C.**  
114 North Commerce Street  
Hinesville, Georgia 31313  
Office (912) 568-5664  
Fax (912) 368-7206

**GRIFFIN PARK  
PHASE 4  
HINESVILLE, GEORGIA**  
(FORMERLY GUYETT ESTATES AT GRIFFIN PARK)  
175th G.M. DISTRICT, LIBERTY COUNTY, GEORGIA



**FINAL PLAT**  
DATE: MARCH 1, 2011  
PROJECT NO.: 2008-49  
SHEET 2 OF 3